



+91 7024 225 225

**DIVINE EMPIRE INDIA PVT. LTD.<sup>®</sup>**

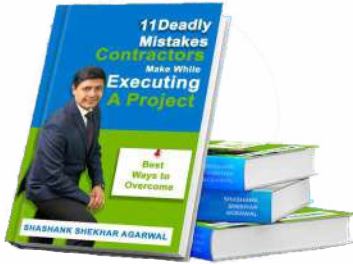
*Shaping the Future of Construction*

An ISO IEC 17025:2017 Accredited Calibration Lab by NABL India

An ISO 9001:2015 Certified Company

# ManiQuip





Available on 

In last **8 years**, we have helped  
**3283 customers**  
completing their projects successfully  
worth more than  
**₹ 83,000 Crores.**

**3157**  
Satisfied  
Clients



**2947**  
Products  
Available



**43 Lakh+**  
Total Units Sold

**600+**  
With 4.8 Rating  
Google Reviews

**Google  
Reviews**  
★★★★★



**4 Countries  
& 23 States**  
Projects using  
our Products



**60+**  
Total  
Employees

**11+**  
Industry  
Specialist



**74.81%**  
Repeat Client  
Percentage

# Prestigious Clients *Chhattisgarh*

- Aaditya Construction
- Acc Mining Private Limited
- Aishwarya Empire
- Amar Infrastructure Limited
- Ambuja Cement Ltd.
- Anand Construction
- APL Apollo Building Products Pvt. Ltd.
- Asian Construction Co.
- Avinash Devlopers Private Limited
- Bajarang Power
- B.B. Varma
- Bindal Construction
- BMS Projects
- Brijesh Kumar Agrawal
- BSBK Private Limited
- Galaxy Synergy Private Limited
- Godawari Power And Ispat Limited
- G.R. Integrated Steel Private Limited
- Jayaswal Neco Industries Ltd.
- JP Associates
- JPW Infratech Private Limited
- Keystone Infra Build
- Kusum Smelters Private Limited
- Laxmi Solar Power Systems Pvt. Ltd.
- Madhusudan Agrawal Project Pvt. Ltd.
- Mahanadi Coal Ltd.
- Monnet Ispat & Energy Ltd.
- Moshwarya Infrastructure Ltd.
- M/s Kanhaiyalal Agrawal
- M/S Sunil Kumar Agrawal LLP
- N K Construction
- Nuvoco Vistas Corporation Ltd.
- Om Associates
- Paramount Tradecom Pvt. Ltd.
- P D Maheshwari
- P S A Construction
- Rishabh Buildtech India Pvt. Ltd.
- RKTC Ltd.
- Sarda Energy & Minerals Ltd.
- Shanti Enggicon Pvt. Ltd.
- Sheela Construction Company
- Shreejikrupa Project Limited
- Shri Kishan And Company Pvt. Ltd.
- South Eastern Coalfields Limited
- Subhash Kumar Agrawal
- Sun & Sun Infra
- Triveni Engicons Pvt. Ltd.
- Tulsi Construction Company
- Vishal Builders
- Wallfort Properties Pvt. Ltd. Wapcos Ltd.



# Prestigious Clients *Other States*



Adani Infra  
(India) Limited



Afcons  
Infrastructure  
Limited



Ahluwalia  
Contracts  
(INDIA) LTD.



Arcons  
Infrastructures



Chevrox  
Constructions  
Pvt. Ltd.



D.P. Jain & Co.  
Infrastructure  
Pvt. Ltd.



DCC Infra  
Pvt. Ltd.



Dilip  
Buildcon Ltd.



DRA



G R Infraprojects  
Limited



Gawar  
Construction



GVPR  
Engineers  
Limited



H.G. Infra  
Engineering  
Limited



HYT Engineering  
Company



KEC  
International  
Limited



Century  
Cement



Larsen And  
Toubro Limited



M/s SMS Ltd.



Megha  
Engineering



Mehrotra  
Buildcon  
Pvt. Ltd.



Nitigya  
Buildcon  
Pvt. Ltd.



NSPCL



RMN  
Infrastructures  
Limited



Shree  
Cement



Shalimar  
Corp.  
Limited



Shelke  
Constructions  
Pvt. Ltd.



Shri S M  
Autade  
Pvt. Ltd.



SRL Mining  
& Developer  
Pvt. Ltd.



Tata  
Projects Ltd.



Voltas  
Limited



Zetwerk  
Manufacturing



Ultratech  
Cement

# Prestigious Clients *Odisha*



ARSS  
Infrastructure



Dalmia  
OCL



Utkal  
Greenex



Gurumaharaj  
Engicon



Shree Balaji  
Engicons



D.N.  
Homes



RKD  
Construction  
Pvt. Ltd.



SPD  
Constructions  
Limited



UMSL  
Limited

- AMJ Global Homes LLP
- ARMM Engineering & Consultants
- Ashirwad Construction
- B C Bhuyan Constructions Pvt. Ltd.
- Daitari Satyabhama Infrastructures
- Dasarathi Naik And Engineers Pvt. Ltd.
- G Group
- Hind Builders
- Kumar Creations Pvt. Ltd.
- M/s Biswashree Industries
- M/s C.P. Arora
- M/s Myspace Home Pvt. Ltd.
- M/s Ojha Construction
- MK Constructions
- Mezdoo Engineering Pvt. Ltd.
- Online Builders Private Limited
- RSTD Infra Projects Private Limited
- Ray Infraprojects Private Limited
- Santosh Kumar Khandelwal
- Shivam Condev Private Limited
- Sudhir Kumar Saideo
- Thakur Buildtech Private Limited
- Tiwari Construction
- Utkal Builder



## Prestigious Clients *North East*

- ARSS Infrastructure
- KDS LAB (INDIA)
- JRA Infrastructure Ltd.
- Map Heights Pvt. Ltd.
- Moshwarya Infrastructure Ltd.
- M/s AJIT CH. Rajbangshi
- M/s Anupam Nirman (P) Ltd.
- M/s M&S Co.
- Mukund Infra
- N.C. Das & Co.
- P K & Company
- Pawan Communication Pvt. Ltd.
- Shivam Condev Pvt. Ltd.
- Vishal Builders



We are now in  
**GUWAHATI**

Beside SML Brahmaputra Coach  
Builders NH-37, Gadhchuk,  
Guwahati, Dist. Kamrup  
PIN-781035



**DIVINE EMPIRE INDIA PVT. LTD.**



### Auto Level

B40A  
B30A  
B20



### Total Station

New IM Series  
New FX Series  
IX Series (Robotics)



### Monitoring System

NET05AX II  
NETIAX II



### GNSS/DGPS

GCX3  
GRX3



Tripod



Prism pole  
& Bipod



Prism with  
target plate



Mini prism  
with Rod



Staves



Battery &  
Charger



Bubble





Concrete / Pan Mixture



Rapid Moisture Meter



Weighing Balance



Cube Moulds



Sieves



Aggregate Impact Value



Flexure Testing Machine



Mortar Cube Vibrating Machine



Sand Pouring Cylinder



Compression Test Machine (CTM)



Concrete Core Cutter



California Bearing Ratio (CBR)



Cube Vibrating Table



Soil Core Cutter with Dolly Rammer



Liquid Limit Device



Marshall Stability Test Apparatus



Slump Cone



Laboratory Oven



**JAYPEE**<sup>®</sup>  
Construction Equipment Solutions

**Authorized Sales  
and Service Partner**



**Bar Bending**



**Bar Cutting**



**Stirrup Bending**



**Suspended Platform**



**Concrete Mixture**



**Material, Passenger  
& Builder Hoist**



**Automatic Batching Plant  
Mobile & Stationary**

**Bar Bending**



**Bar Cutting**



**Wet Screed**



**Vibratory Rammer**



**Concrete Groove Cutting**



**Forward Plate Compactor**



**Walk Behind Roller**



**Concrete Vibrators Diesel/ Electrical**



**Mini Crane/ Monkey Hoist**





**WACKER  
NEUSON**

*all it takes!*

Authorized Sales and  
Service Partner

Needle  
Vibrator



HMS

IRFU

De-watering  
Pumps



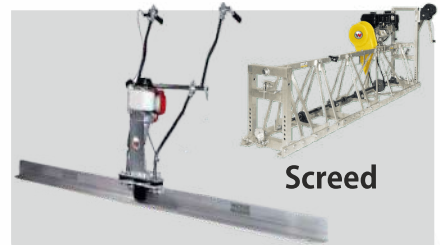
Shutter  
Vibrator



Plate Compactor



Screed



IREN  
& Converter



Groove  
Cutter



Vibratory  
Rammer





MEP Product Range



FIS EM 585 S



FIS V PLUS 360



Fischer PU Foam



Passive Fire Stop



Anchor & Fastner





**Admixture**



**Polysulphide Sealant**



**Curing Compound**



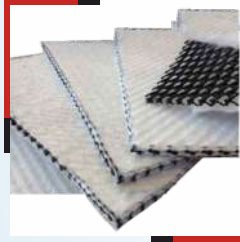


**TECHFAB INDIA**

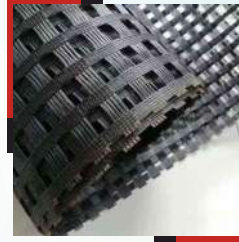
At the Heart of Geosynthetic Activity



**Geo Cell**



**Drainage Geo Composite**



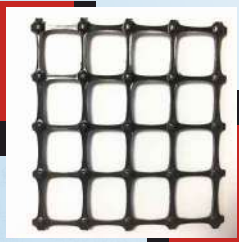
**Uniaxial &  
Biaxial GeoGrid**



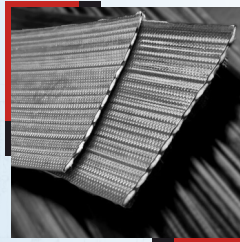
**Geo Textile**



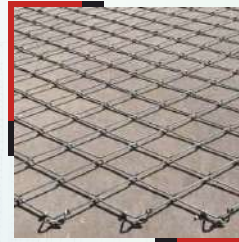
**TechRhombus HRC  
(High Resistance Clip)**



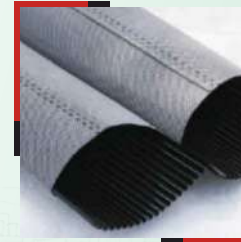
**TechGrid PP  
Biaxial Geogrid**



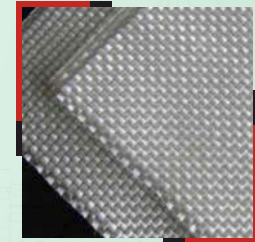
**TechStrap**



**Techslope Mesh**



**Techdrain**



**Polyester Woven  
Geo Textile**

# Safety Equipments



Green Net



Safety Net



Safety Jackets



Safety Shoes &  
Gumboots



Reflective &  
Caution Tape



Safety Helmets



Safety Gloves



Safety Belt



Boiler Suit



Fire Extinguisher



Batten Light



Safety Cone



Convex Mirror



PVC Barriers



Plastic Floor Stand

# ROAD FURNITURE



**Delineator**  
with application



**Speed Breaker**  
with application



**Road Studs**  
with application



**Crash Barrier**  
with application



**Thermo Plastic Paint**  
with application

Powered By  
**EICHER** Engines

 **PERFECT**<sup>®</sup>  
SOLVING YOUR POWER NEEDS...  
Authorized Channel Partner



**Light Tower**

**DIVINE EMPIRE INDIA PVT. LTD.**



**DG set - 2.5 KVA to 2500 KVA**



Motor Grader



Total Station & DGPS



Excavators



Baby Rollers



Loader



Tower Cranes

# Divine RentQuip

The Rise of  
Rental Industry In  
Construction  
Equipments



Safety Hydra  
(Farana)



## Miscellaneous Products



Water Stopper



Separation Membrane  
(White & Black)



Dowel Bar Sleeve



Concrete Slurry



Texturing Brush



Bull Float



Expansion Joint Sheet/  
Bituminous Sheet/  
Salitex Board

## GARMIN Hand GPS



Etrex 10



Etrex 22x



Etrex 32x



Oregon 750



Montana 680



# Supreme

People — who know plastics best

Authorized Channel Partner



**Backer Rod**



**Debonding Strip**



**Expansion Joint Sheet**

(Cross Link Polymer, Density  
75% / 100%)



**Expansion Joint Sheet**

(Cross Link Polymer, Density - 28%)



**Tile Protector Sheet**



**EP Form Sheet**



**Insulation board**



**Insulation Flex Sheet**



**Reflector Sheet**



**XLPE Sheet  
with Silver Foil**



Authorized Sokkia Service Center - Original Sokkia Collimator



Pile Testing



NABL Accredited Lab (for Calibration)

**NABL**  
Accredited Lab



Our Founder & Director,  
**Mr. Shashank Agarwal,**

getting recognised for strong & consistent payments, from Fischer India Pvt. Ltd. for FY 22-23 at Bangaluru, India.

Our Honourable Chairman,  
**Shri Vijay Kumar Agarwal,**  
getting recognised, on behalf of team Divine,  
for outstanding performance with Asian  
Paints during FY 22-23 at Paris, France.

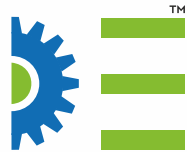


# DIVINE EMPIRE INDIA PVT. LTD. (RAIPUR H.O.)

☎ 0771 4900515    🌐 [www.thedivineempire.com](http://www.thedivineempire.com)

📍 401, 4th Floor, Lalganga Midas, Fafadih Chowk,  
Raipur, Chhattisgarh - 492001

✉ [support@thedivineempire.com](mailto:support@thedivineempire.com)



## RAIPUR

S P Cold Storage Campus,  
Beside Hotel Paradise,  
Below Khamtarai Over Bridge,  
Khamtarai, Raipur (C.G.) 492001

## BHUBANESHWAR

Plot No-39,43,51, Pahal,  
Near Mahindra Showroom  
(Next to Meesho warehouse)  
Bhubaneswar, Khurda,  
Odisha Pin-754001

## GUWAHATI

Beside SML Brahmaputra Coach  
Builders NH-37, Gadhchuk,  
Guwahati, Dist. Kamrup  
PIN-781035

## Contact Details

### Sales & Support

☎ 7024 225 226

✉ [support@thedivineempire.com](mailto:support@thedivineempire.com)

### Technical & Service

☎ 7024 225 223

✉ [service@thedivineempire.com](mailto:service@thedivineempire.com)

### Store & Dispatch

☎ 7400 748 000

✉ [scm@thedivineempire.com](mailto:scm@thedivineempire.com)

Catpops.in - 7987829007



Connect with us